

CABO CODERA TO CABO TRES PUNTAS INCLUDING ISLA LA TORTUGA TO ISLAS LOS TESTIGOS

SOUNDINGS IN METERS
(Under 30 in meters and decimeters)
related to the approximate level of Mean Low Water
HEIGHTS IN METERS ABOVE MEAN SEA LEVEL
Contour interval 200 meters

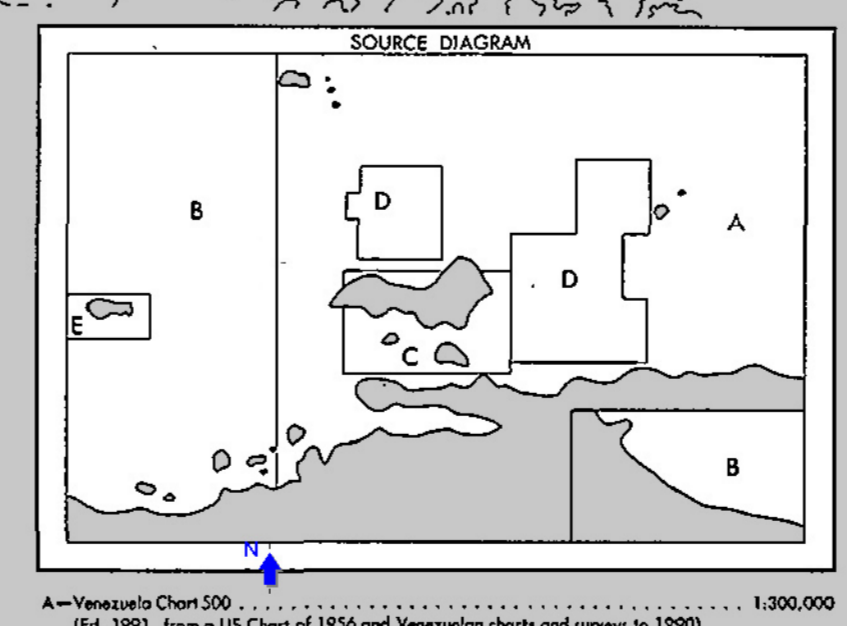
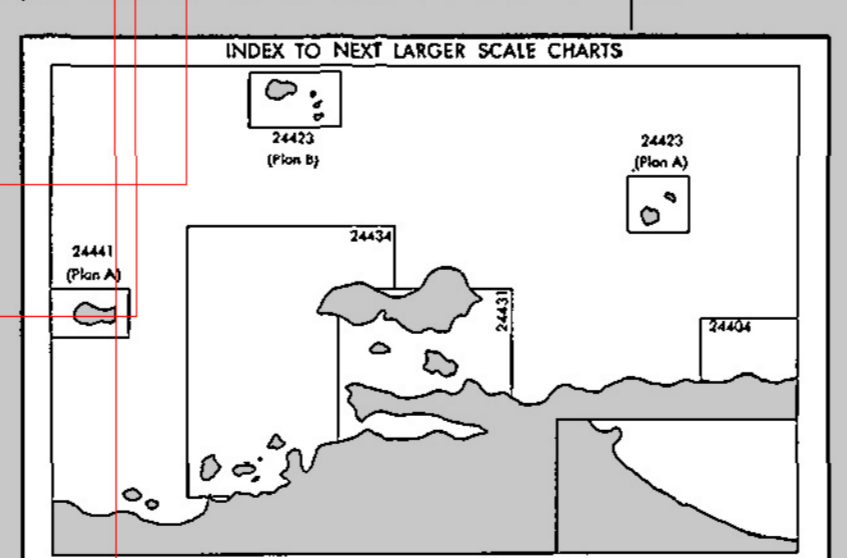
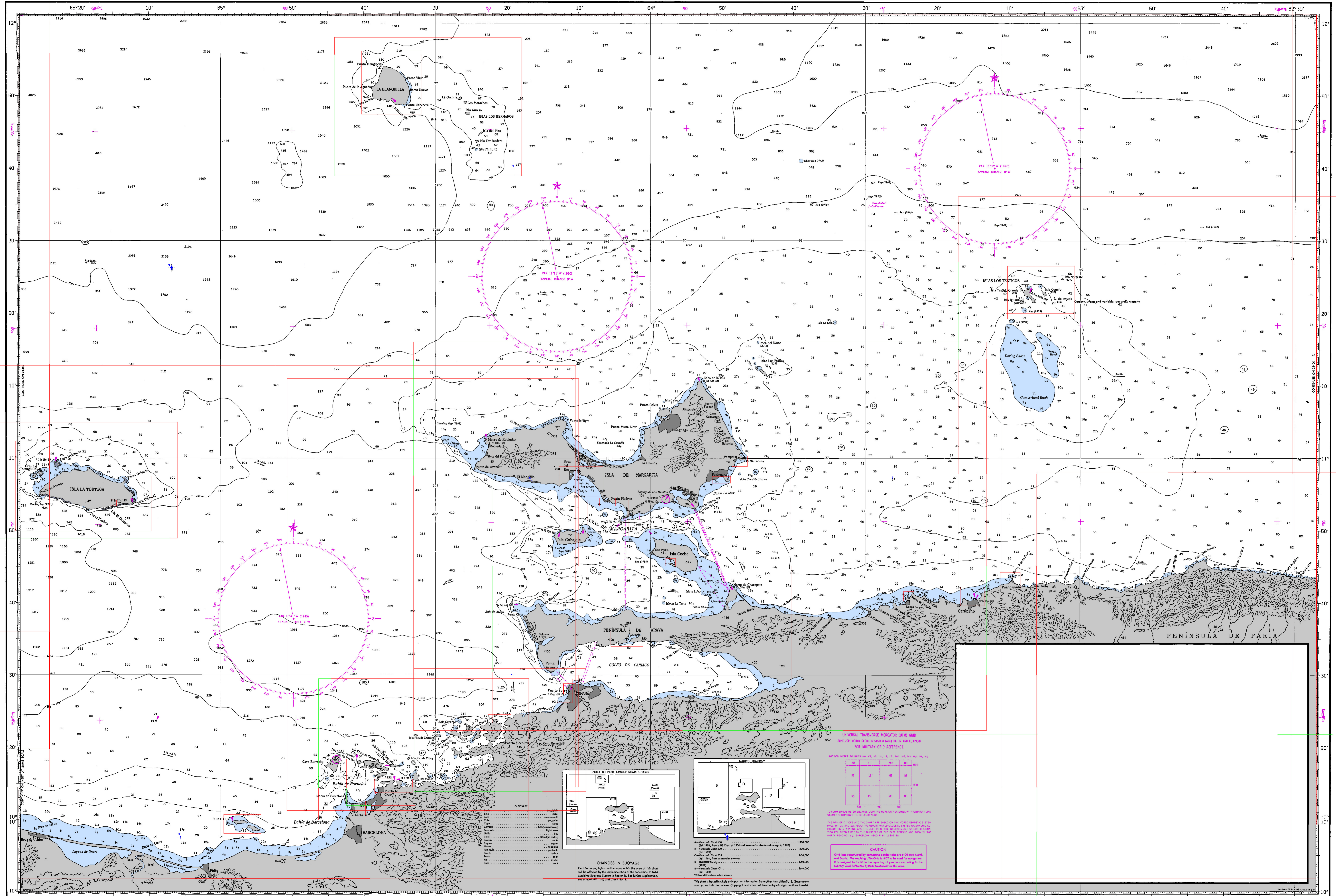
SOUNDINGS IN METERS

CAUTION
Differences in latitude and longitude may exist between this and other charts of the same locality. The number of paces from one chart to another should be done by bearing and distance from common features.

NOTE
Soundings on this chart are corrected for sound velocity.

MERCATOR PROJECTION
WORLD GEODETIC SYSTEM - WGS
SCALE 1:500,000 AT LATITUDE
For Symbols and Abbreviations, see Chart No. 1

From HYCOOP surveys and Venezuelan charts to 1991
1:14, Aug 1991



CHANGES IN BUOYAGE
Changes in buoyage within the area of this chart will be indicated by the Department of the Navy, Hydrographic Office, Washington, D.C. For further details, see the NOTICES TO MARINERS, Vol. 1, Part I, Section 1.

UNIVERSAL TRANSVERSE MERCATOR (UTM) GRID
ZONE 18S, WORLD GEODETIC SYSTEM (WGS 84) DATUM AND ELLIPSOID
FOR MILITARY GRID REFERENCE

18S	18S	18S	18S	18S
18S	18S	18S	18S	18S
18S	18S	18S	18S	18S
18S	18S	18S	18S	18S

1:000,000 METER SQUARES (U.S. AND METRIC)
1:500,000 METER SQUARES (U.S. AND METRIC)
1:250,000 METER SQUARES (U.S. AND METRIC)
1:125,000 METER SQUARES (U.S. AND METRIC)
1:62,500 METER SQUARES (U.S. AND METRIC)

CAUTION
Grid lines constructed by reprojecting border data are NOT true North and South. The resulting UTM Grid is NOT to be used for navigation. It is designed to facilitate the reporting of positions according to the Military Grid Reference System prescribed for this area.

Prepared and published by the
DEFENSE MAPPING AGENCY, HYDROGRAPHIC CENTER
Washington, DC
© Copyright 1991 by the United States Government
Approved for public release; distribution is unlimited.

WARNING
The greatest accuracy will not be obtained unless the user follows the instructions for using this product. The Director, Defense Mapping Agency, Attention: Data Distribution, is responsible for the accuracy of the data. For more information, see the User's Manual for the Defense Mapping Agency's Data Distribution System.

Cabo Codera to Cabo Tres Puntas
SOUNDINGS IN METERS—SCALE 1:500,000

Users should refer to the notes, editions, and amendments for the latest information on this product. The Director, Defense Mapping Agency, Attention: Data Distribution, is responsible for the accuracy of the data. For more information, see the User's Manual for the Defense Mapping Agency's Data Distribution System.